

MEA® DRAIN TOP 1000

Composite grating load class C250



Top 1000 CLIPFIX channel cover

With non-bolted CLIPFIX channel cover securement. Suitable for system **S 1000**. For channel units and catch basins.

Width: 122mm.

Length: 0.5 Meter

Color: Black

Inlet sectional area: 207cm²/ m 6mm slot width

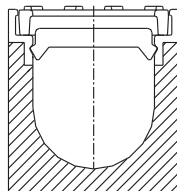
Securement: CLIPFIX, STARFIX, bolted

Material: PA with glass-fibre reinforcement

Loading class C250 according to EN 1433 with CLIPFIX



material-group	Product description	Material	Length mm	EDP-No. 010...	EAN-Code 4001990...	Inlet sect area Øcm ² /m	kg/unit	units/pallet
MD	Perforated grating 6/95	Comp.	500	152726	281826	207	1.60	216



CLIPFIX non-bolted locking mechanism

Every reasonable effort has been taken to ensure the accuracy of this document. However we cannot accept responsibility for inaccuracies resulting from undetected errors or omissions.

Toll Free:877-385-5130
www.northstarindustries.ca

MEA® DRAIN TOP 1000

Composite grating load class C250



Top SV 1000 CLIPFIX channel cover

With non-bolted CLIPFIX channel cover securement. Suitable for system **SV 1000**. For channel units and silt boxes.

Width: 122mm.

Length: 0.5 Meter

Color: Black

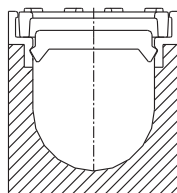
Inlet sectional area: 207cm²/m 6mm slot width

Securement: CLIPFIX, STARFIX, bolted

Material: PA with glass-fibre reinforcement

Loading class C250 according to EN 1433 with CLIPFIX and longitudinal fixation lugs

material-group	Product description	Material	Length mm	EDP-No. 010...	EAN-Code 4001990...	Inlet sect. area Øcm ² /m	kg/unit	units/pallet
MD	SV 1000 Plastic slotted grating 6/95 with longitudinal fixation lugs	Comp.	500	152724	280867	207	1,60	216



CLIPFIX non-bolted locking mechanism

Every reasonable effort has been taken to ensure the accuracy of this document. However we cannot accept responsibility for inaccuracies resulting from undetected errors or omissions.

Toll Free:877-385-5130
www.northstarindustries.ca