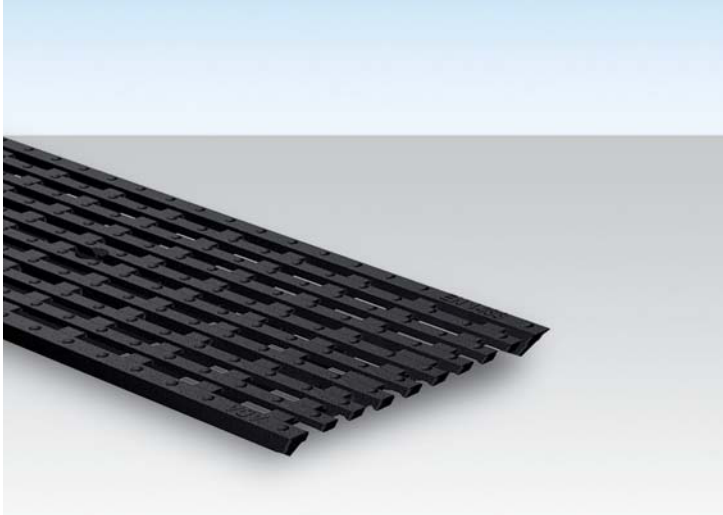


MEA® DRAIN TOP 1500

ADA gratings



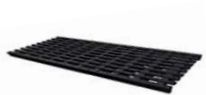
Top 1500 ADA channel gratings

With PROFIX non-bolted locking mechanism. Suitable for system **EN 1500**

With longitudinal fixation lugs. For channel units and catch basin. Width 172 mm.

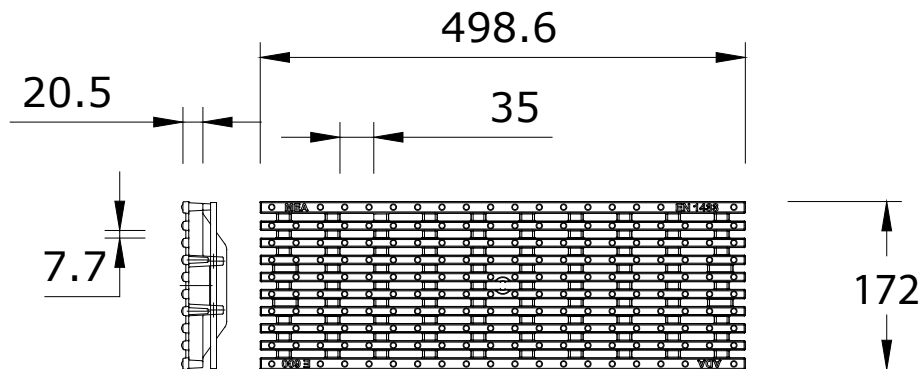
The channel grating complies with **ADA** requirements (American Disabilities Act). The slots are placed perpendicular to the flow of traffic to be wheelchair and disability friendly. Channel gratings for cross drainage the slots are not greater than 13 mm (1/2 inch) wide and less than 40 mm long. Slip-resistant heights below 3 mm. Slip-resistant surface is ductile iron.

Loading class E600** to EN 1433 with PROFIX



material-group	Product description	Material	Length mm	EDP-No. 010...	EAN-Code 4001990...	Inlet sect. area Øcm² /m	kg/unit	units/pallet
MD	ADA longitudinal ductile iron grating 35/7.7	Ductile iron	500	152547	273951	560	7.45	104

** From loading class D400 not suitable for cross drainage of high speed roads and motorways.



EN 1500 ADA longitudinal ductile iron grating 35/7.7 with PROFIX, loading class E600**

Every reasonable effort has been taken to ensure the accuracy of this document. However we cannot accept responsibility for inaccuracies resulting from undetected errors or omissions.

Toll Free: 877-385-5130
www.northstarindustries.ca