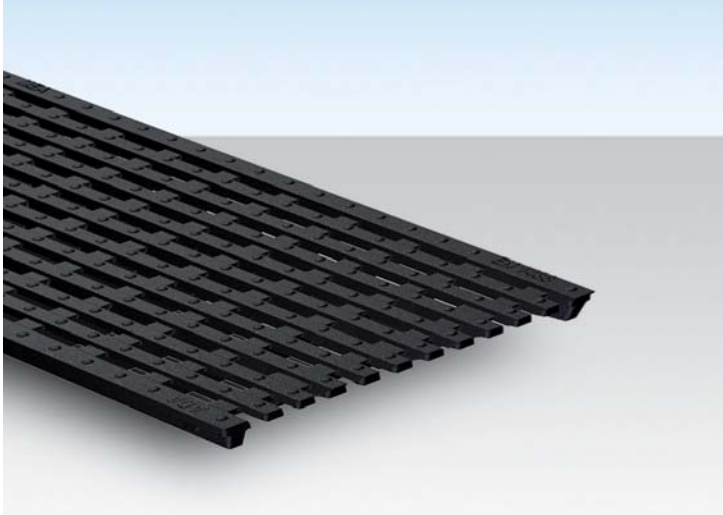


# MEA® DRAIN TOP 2000

## ADA gratings



### Top 2000 ADA channel gratings

With non-bolted PROFIX channel grating securement. Suitable for system **EN 2000**.  
With longitudinal fixation lugs. For channel units and catch basin. Width 222 mm.

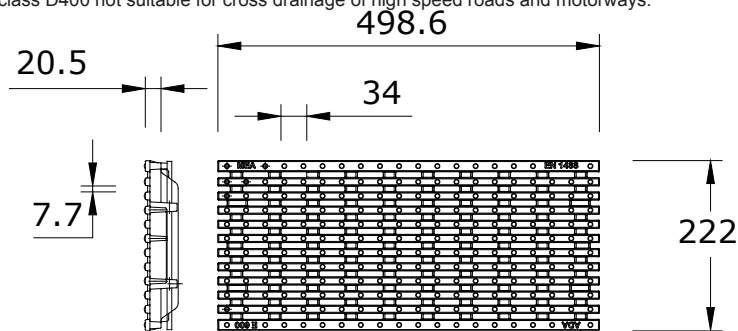
The channel grating complies with **ADA** requirements (American Disabilities Act). The slots are placed perpendicular to the flow of traffic to be wheelchair and disability friendly. Channel gratings for cross drainage the slots are not greater than 13 mm (1/2 inch) wide and less than 40 mm long. Slip-resistant heights below 3 mm. Slip-resistant surface is ductile iron.

#### Loading class E600\*\* according to EN 1433 with PROFIX



material-group	Product description	Material	Length mm	EDP-No. 010...	EAN-Code 4001990...	Inlet sect. area Øcm <sup>2</sup> /m	kg/unit	units/pallet
MD	ADA longitudinal ductile iron grating 34/7.7	Ductile iron	500	152549	273968	680	10.20	54

\*\* From loading class D400 not suitable for cross drainage of high speed roads and motorways.



EN 2000 ADA longitudinal ductile iron grating 34/7.7 with PROFIX, loading class E600\*\*

Every reasonable effort has been taken to ensure the accuracy of this document. However we cannot accept responsibility for inaccuracies resulting from undetected errors or omissions.

Toll Free: 877-385-5130  
www.northstarindustries.ca