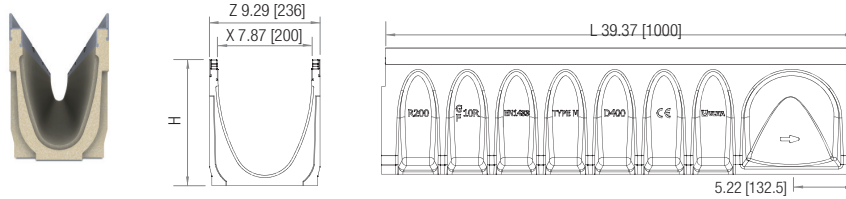


MULTIV+200

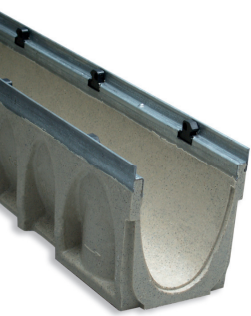
LOAD CLASS
UP TO E600 *
EN-1433 STANDARD

ULMA Linear Trench Drain, type **MULTIV+®** R200; External width 9.29 inches [236 mm], Internal width 7.87 inches [200 mm], with overall heights between 3.15 and 14.57 inches [80 and 370 mm]; With overall heights between 3.94 inches and 9.84 inches for 0,5% presloped channels and between 3.15 and 11.81' for constant depth trench drains.; sections 39.37 inches [1 LM] in length; optimized V-shape with self-cleaning effect; especially designed for trench drains runs with no longitudinal slope; galvanized steel edges for lateral protection; **Rapidlock®** boltless system.

OPTIMIZED
V-SHAPE



TRENCH DRAINS



19.69 in trench drains

Trench Drain Code		L (in/mm)	H (in/mm)		Width (in/mm)		Ø Outlet* (in/mm)		Hydraul. Section (in ² /cm ²)
Galvanized edge	Ductile iron edge		Initial	Final	Z	X	Vert.	Hor.	
R200GH8**	-	39.37 [1000]	3.15 [80]	3.15 [80]	9.29 [236]	7.87 [200]	6 [160]	-	12.25 [79]
R200GH12**	-	39.37 [1000]	4.72 [120]	4.72 [120]	9.29 [236]	7.87 [200]	6 [160]	-	24.65 [159]
R200G00R	R200MFG00R	39.37 [1000]	6.69 [170]	6.69 [170]	9.29 [236]	7.87 [200]	8 [200]	-	31.62 [204]
R200G00R	R200MFG00R	39.37 [1000]	8.66 [220]	8.66 [220]	9.29 [236]	7.87 [200]	8 [200]	-	44.02 [284]
R200G01	R200MFG01	39.37 [1000]	8.66 [220]	8.86 [225]	9.29 [236]	7.87 [200]	8 [200]	-	45.66 [294,6]
R200G02	R200MFG02	39.37 [1000]	8.86 [225]	9.06 [230]	9.29 [236]	7.87 [200]	8 [200]	-	46.92 [302,7]
R200G03	R200MFG03	39.37 [1000]	9.06 [230]	9.25 [235]	9.29 [236]	7.87 [200]	8 [200]	-	48.19 [310,9]
R200G04	R200MFG04	39.37 [1000]	9.25 [235]	9.45 [240]	9.29 [236]	7.87 [200]	8 [200]	-	49.45 [319]
R200G05	R200MFG05	39.37 [1000]	9.45 [240]	9.65 [245]	9.29 [236]	7.87 [200]	8 [200]	-	50.72 [327,2]
R200G06	R200MFG06	39.37 [1000]	9.65 [245]	9.84 [250]	9.29 [236]	7.87 [200]	8 [200]	-	51.97 [335,3]
R200G07	R200MFG07	39.37 [1000]	9.84 [250]	10.04 [255]	9.29 [236]	7.87 [200]	8 [200]	-	53.24 [343,5]
R200G08	R200MFG08	39.37 [1000]	10.04 [255]	10.24 [260]	9.29 [236]	7.87 [200]	8 [200]	-	54.5 [351,6]
R200G09	R200MFG09	39.37 [1000]	10.24 [260]	10.44 [265]	9.29 [236]	7.87 [200]	8 [200]	-	55.77 [359,8]
R200G10	R200MFG10	39.37 [1000]	10.44 [265]	10.63 [270]	9.29 [236]	7.87 [200]	8 [200]	-	57.04 [368]
R200G10R	R200MFG10R	39.37 [1000]	10.63 [270]	10.63 [270]	9.29 [236]	7.87 [200]	8 [200]	-	57.04 [368]
R200G11	R200MFG11	39.37 [1000]	10.63 [270]	10.83 [275]	9.29 [236]	7.87 [200]	8 [200]	-	60.2 [388,4]
R200G12	R200MFG12	39.37 [1000]	10.83 [275]	11.02 [280]	9.29 [236]	7.87 [200]	8 [200]	-	61.4 [396,1]
R200G13	R200MFG13	39.37 [1000]	11.02 [280]	11.22 [285]	9.29 [236]	7.87 [200]	8 [200]	-	62.59 [403,8]
R200G14	R200MFG14	39.37 [1000]	11.22 [285]	11.42 [290]	9.29 [236]	7.87 [200]	8 [200]	-	63.8 [411,6]
R200G15	R200MFG15	39.37 [1000]	11.42 [290]	11.61 [295]	9.29 [236]	7.87 [200]	8 [200]	-	64.99 [419,3]
R200G16	R200MFG16	39.37 [1000]	11.61 [295]	11.81 [300]	9.29 [236]	7.87 [200]	8 [200]	-	66.19 [427]
R200G17	R200MFG17	39.37 [1000]	11.81 [300]	12.01 [305]	9.29 [236]	7.87 [200]	8 [200]	-	67.39 [434,8]
R200G18	R200MFG18	39.37 [1000]	12.01 [305]	12.20 [310]	9.29 [236]	7.87 [200]	8 [200]	-	68.59 [442,5]
R200G19	R200MFG19	39.37 [1000]	12.20 [310]	12.40 [315]	9.29 [236]	7.87 [200]	8 [200]	-	69.78 [450,2]
R200G20	R200MFG20	39.37 [1000]	12.40 [315]	12.60 [320]	9.29 [236]	7.87 [200]	8 [200]	-	70.99 [458]
R200G20R	R200MFG20R	39.37 [1000]	12.60 [320]	12.60 [320]	9.29 [236]	7.87 [200]	8 [200]	-	70.99 [458]
R200G30R	R200MFG30R	39.37 [1000]	14.57 [370]	14.57 [370]	9.29 [236]	7.87 [200]	8 [200]	-	84.01 [542]
19.69 IN TRENCH DRAINS									
R200G00RM	R200MFG00RM	19.69 [500]	8.66 [220]	8.66 [220]	7.32 [186]	5.90 [150]	6 [160]	4.92 [125]	44.02 [284]
R200G10RM	R200MFG10RM	19.69 [500]	10.63 [270]	10.63 [270]	7.32 [186]	5.90 [150]	6 [160]	6 [160]	57.04 [368]
R200G20RM	R200MFG20RM	19.69 [500]	12.60 [320]	12.60 [320]	7.32 [186]	5.90 [150]	6 [160]	6 [200]	70.99 [458]

*Vert. outlets on order.
**U shaped section.

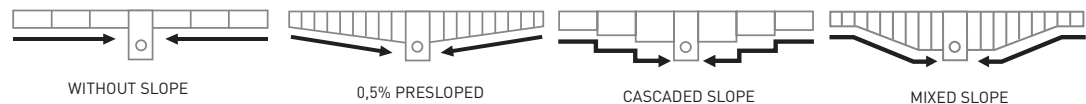
LOCKING SYSTEM



FAST, BOLTLESS SAFETY LOCKING 8 fastening points per trench drain.

rapidlock®

SLOPE DESIGNS



*For cross-drainage in heavy traffic areas, we recommend our KOMPAQDRAIN® system.

MATERIAL PROPERTIES

Channel units and construction units

- Polymer concrete: based on polyester resin, with natural minerals
- Compressive resistance: 90-130 N/mm²
- Flexural strength: 18-25 MPa
- Modulus of elasticity: 25000 MPa
- Density: 2,3 kg/dm³
- Linear expansion coefficient: $1 \times 10^{-5} 1/C$
- Unalterable in freeze/thaw cycles
- Water absorption level: 0 mm
- Water absorption coefficient: 0-0,3

Channel covers

- Ductile iron
- Galvanized steel
- Stainless steel
- Plastic

Edge protection

- Ductile iron
- Galvanized steel
- Stainless steel

CHANNEL HYDRAULIC CAPACITY

Length (m)	MULTI V+ 200						
	R200.H8	R200.H12	R200.000R	R200.00R	R200.10R	R200.20R	R200.30R
5	2,14	6,19	8,90	14,93	22,35	31,16	41,19
10	1,96	5,81	8,41	14,11	21,09	29,24	38,39
15	1,82	5,53	8,00	13,57	20,29	28,11	36,88
20	1,71	5,29	7,74	13,11	19,64	27,23	35,71
25	1,61	5,09	7,51	12,74	19,13	26,54	34,82
30	1,53	4,91	7,29	12,41	18,65	25,88	33,97
40	1,40	4,59	6,91	11,81	17,79	24,73	32,47
50	1,30	4,33	6,58	11,29	17,04	23,76	31,26
60	1,21	4,11	6,29	10,83	16,42	22,90	30,14
70	1,14	3,92	6,01	10,44	15,85	22,13	29,17
80	1,08	3,75	5,80	10,10	15,34	21,43	28,28
90	1,04	3,61	5,61	9,78	14,87	20,82	27,47
100	0,99	3,48	5,43	9,49	14,45	20,25	26,72