

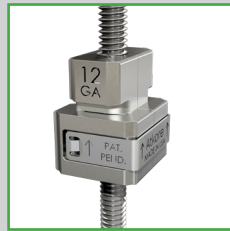
ATKORE SMART-NUT™ FOR THREADED RODS



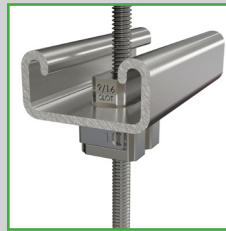
Installation



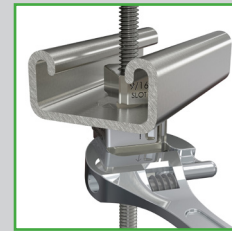
Snap-on
Rod



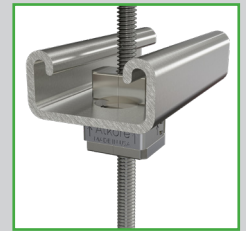
Adjust
Up/Down



Insert
Through Strut



1/4
Turn



Smart-Nut
Locked

Key Features

- Labor Savings
- Quickly Installed and Removed
- High Strength Yield
- To be used with $\frac{9}{16}$ " x $1\frac{1}{8}$ " Strut holes
- No re-burring of threaded rods required
- No threading thread
- Simplifies multiple levels trapeze installation
- Multiple applications for threading fixtures to strut
- Made in the USA

Specifications

Material	Iron, Spring Steel Band
Finish	Zinc Electroplate Trivalent
Color	12 Gauge Silver, 14 Gauge Gold
Application	Attaching threaded rod

Part Number	Gauge	Thread	Spring Band	A Head Width	B Height	C Width	D Length	Install A Max Recommended Load 3x Safety Factor	Install B Max Recommended Load 3x Safety Factor
P3018-1420EG	14	1/4"-20	Gold					450 lbs	350 lbs
P3018-3816EG	14	3/8"-16	Gold					450 lbs	350 lbs
P3019-1420EG	12	1/4"-20	Silver					800 lbs	600 lbs
P3019-3816EG	12	3/8"-16	Silver					800 lbs	600 lbs
				12mm (0.472in)	25.92mm (1.020in)	20.0mm (0.787in)	22.0mm (0.866in)		



For more info visit atkore.com/unistrut

